

# METAL LEGS

ENDLESS POSSIBILITIES



BUILT TO LAST, DESIGNED TO IMPRESS

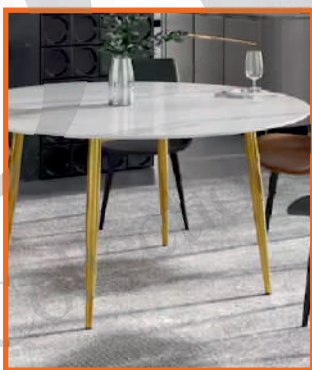
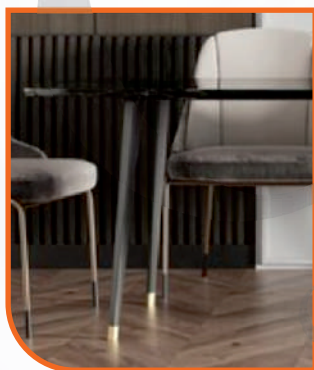
**OLiO<sup>TM</sup>**  
Collection of Intelligent Fittings

# OLiO<sup>TM</sup>

Collection of Intelligent Fittings

## METAL LEGS

ENDLESS POSSIBILITIES





## ABOUT US

Your premier source for high-quality metal legs for furniture. We're a dedicated team of experts passionate about providing exceptional products and outstanding customer service.

With years of experience in the furniture industry, we recognized the need for a reliable supplier of premium metal legs that combine style, durability, and functionality. That's why we founded OLIO METAL LEGS to bridge the gap between manufacturers, designers, and makers who demand the best.

Our extensive range of metal legs is carefully curated to cater to diverse tastes, styles, and applications. From modern and sleek to traditional and ornate, our products are designed to elevate the aesthetic and performance of any furniture piece.

At OLIO , we're committed to building long-lasting relationships with our customers. We achieve this by offering:-

- Expert advice and guidance to help you choose the perfect metal legs.
- Unparalleled customer support to address any questions or concerns.
- Competitive pricing without compromising on quality.
- Fast and reliable shipping to ensure timely delivery.

Whether you're a furniture designer, manufacturer, or enthusiast, we invite you to explore our collection and experience the OLIO METAL LEGS difference.



The Table Series Available in different sizes which are mention below:

Lenght (mm)	Width (mm)	Lenght (mm)	Width (mm)
900	600	900	750
1200	600	1200	750
1500	600	1500	750
1800	600	1800	750
2100	600	2100	750
2400	600	2400	750

Lenght (mm)	Width (mm)
1200	1200
1500	1200
1800	1200
2100	1200
2400	1200





## INDEX OF **LEG SERIES**



### **06-14**

#### **ALBA SERIES**

- Alba Leg Specification
- Alba 01
- Alba 02
- Alba 03
- Alba 04
- Alba 05
- Alba 06
- Alba 07



### **15-20**

#### **BLISS SERIES**

- Bliss Leg Specification
- Bliss 01
- Bliss 02
- Bliss 03
- Bliss 04



### **21-24**

#### **CAIRO SERIES**

- Cairo Leg Specification
- Cairo 01
- Cairo 02



### **26-29**

#### **DUNE SERIES**

- Dune Table Series Specification
- Dune 01
- Dune 02



### **31-34**

#### **DUNE 2 TONE COLUR SERIES**

- Dune 2 Tone Colour Series Specification
- Dune TT 01
- Dune TT 02



### **35-38**

#### **LUXOR SERIES**

- Luxor Leg Specification
- Luxor Legs

## ALBA SERIES

### Direct Screwing Method:

Elevate your furniture design with our Alba Metal Leg Series, a sleek and sturdy solution for modern furniture pieces. Crafted from high-quality metal, this leg features a simple yet robust design that ensures stability and durability.

### Key Features:

- Direct screw mounting for easy installation.
- Sleek, minimalist design complements modern furniture styles.
- Available in various finishes to suit your design aesthetic.

### Specifications:

- Material: High-quality metal
- Finish: Antique Silver, Antique Gold, Metallic Gold, Rush Brown, Metallic Silver, Metallic Grey, Amazon, Black Matt, Slate Grey, White Matt, Birch Satin, Glossy White.

### Applications:

- Side tables
- Desks
- Dining Tables
- Office tables
- Study tables
- Other modern furniture pieces





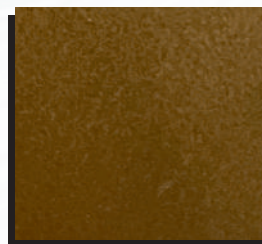
## CHOICES OF FINISH



Antique Silver



Antique Gold



Metallic Gold



Rush Brown



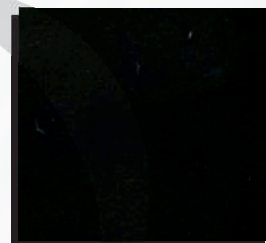
Metallic Silver



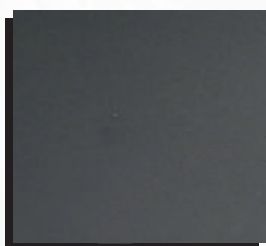
Metallic Grey



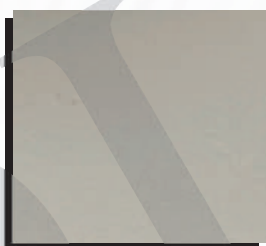
Amazon



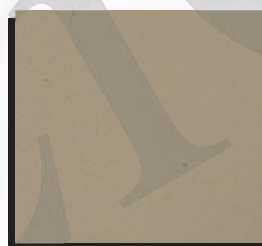
Black Matt



Slate Grey



White Matt



Brick Satin

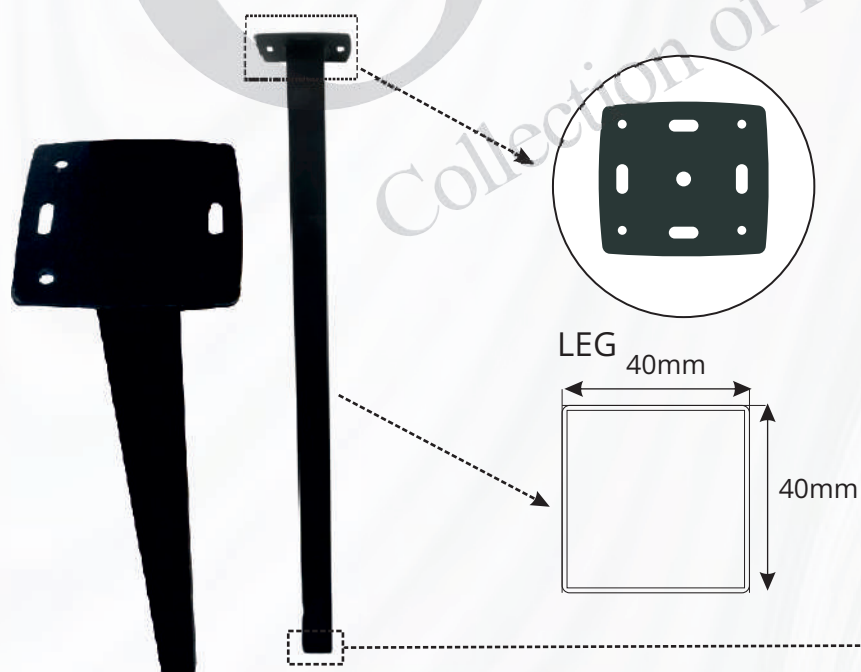


Glossy White

The Alba Series offers 12 color choices to bring your vision to life.



## ALBA 01



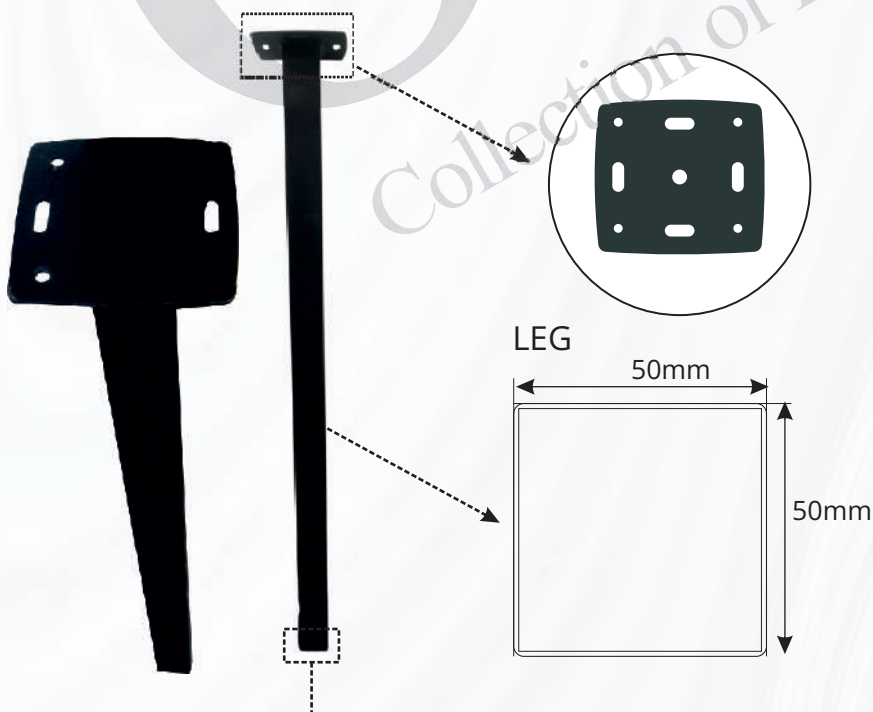
Alba 01 Series comes in Square Shape and size is: 40mm

Height Adjustable Plinth



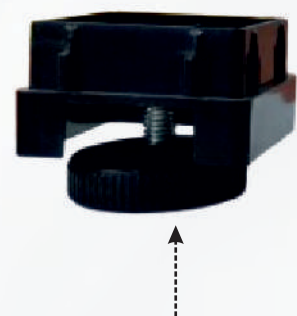


## ALBA 02

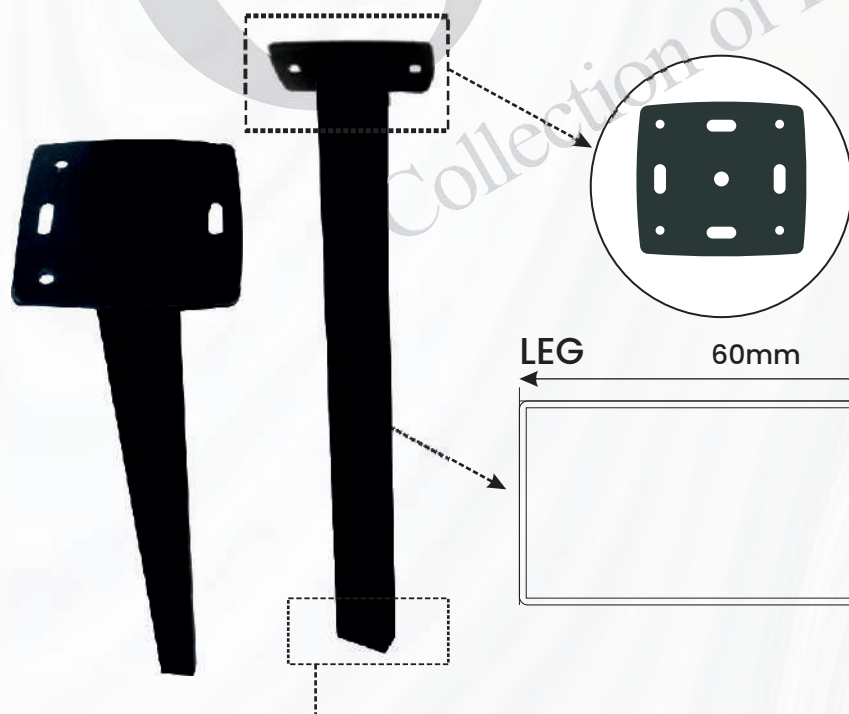


Alba 02 Series comes in Square Shape and size is: 50mm

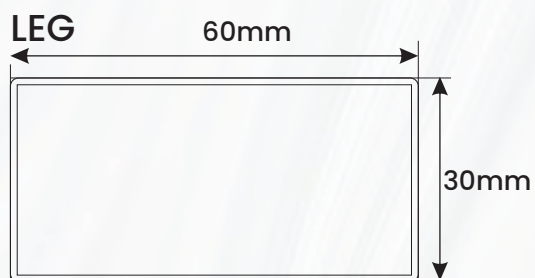
Height Adjustable Plinth



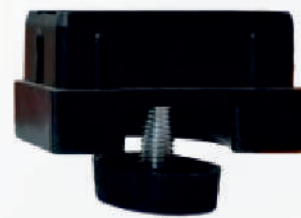
## ALBA 03



Alba 03 Series comes in Rectangular Shape. Sizes: 60mm x 30mm

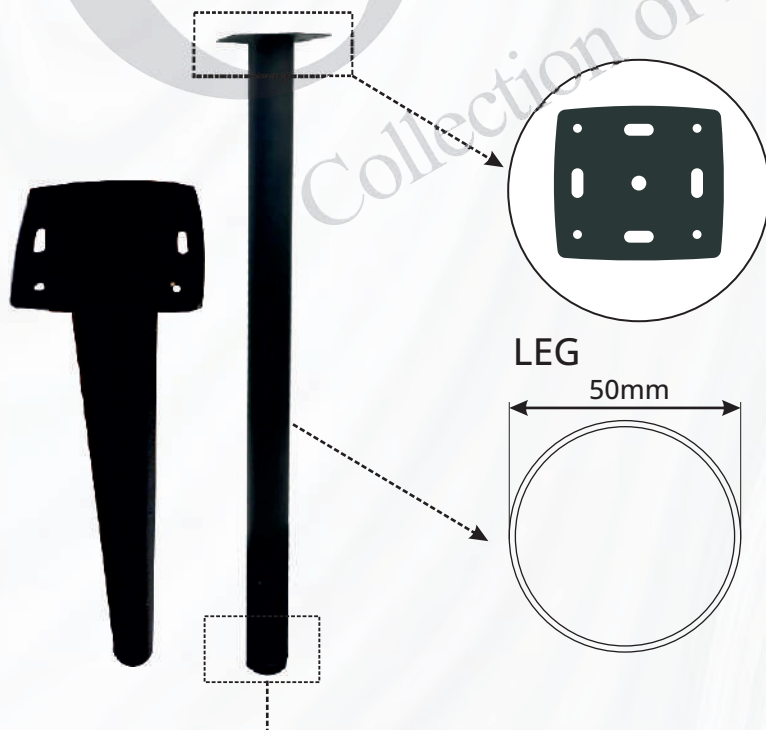


Height Adjustable Plinth





## ALBA 04



Alba 04 Series comes in Circular Shape and size is: 50mm

Height Adjustable Plinth

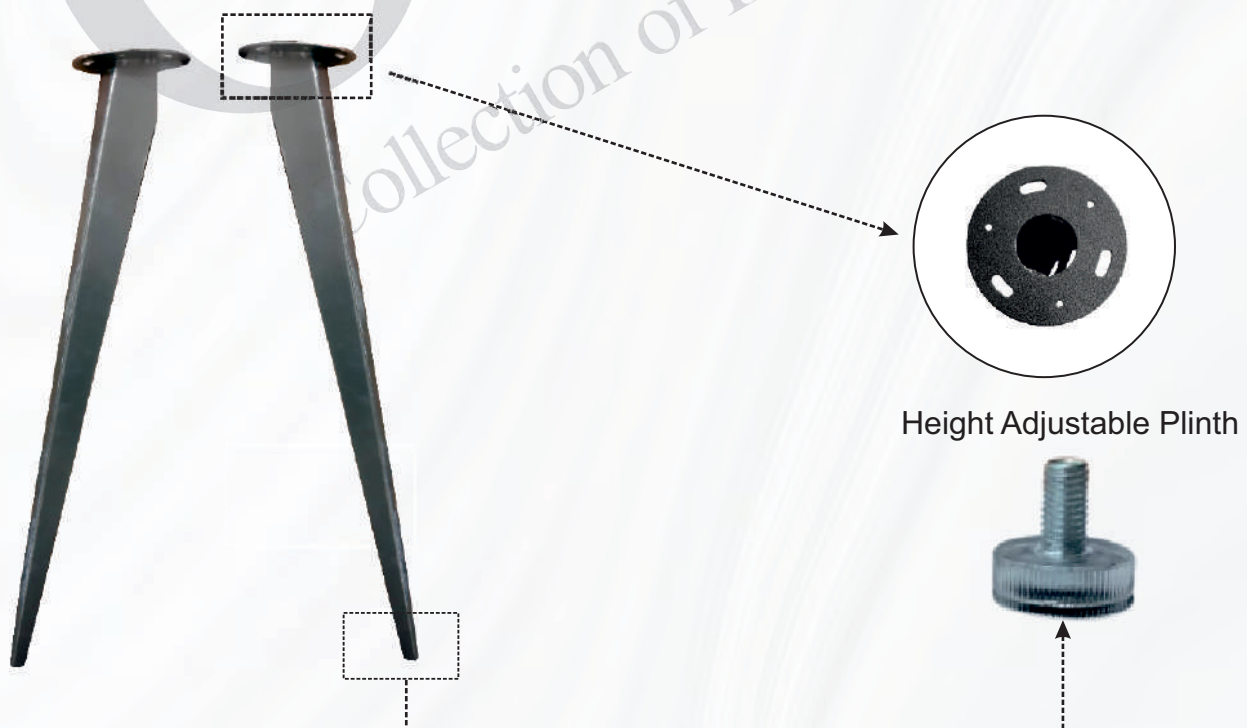


## ALBA 05

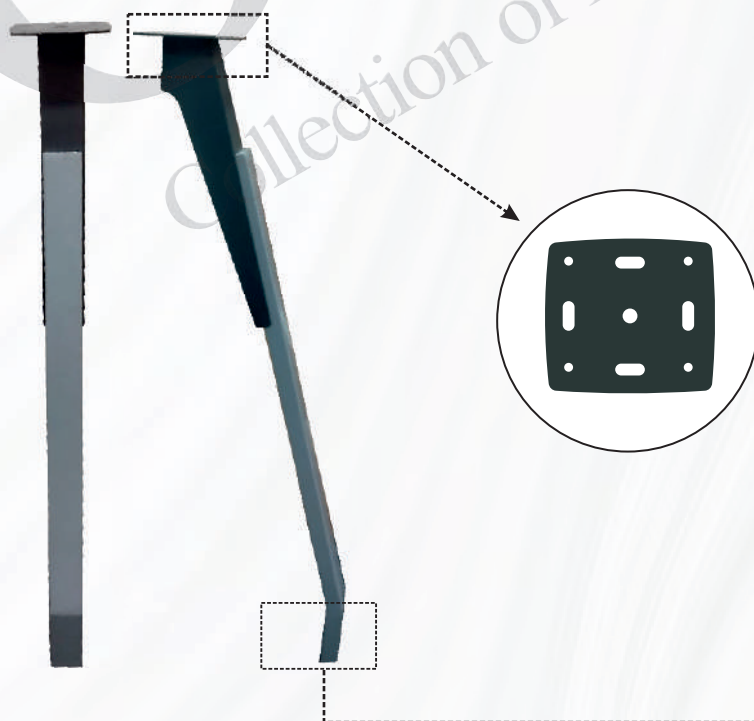




## ALBA 06



## ALBA 07



Height Adjustable Plinth





## BLISS SERIES

### Bliss Leg Series

Elevate your furniture design with our Bliss Leg Series, a sleek and sturdy solution for modern furniture pieces. Crafted from high-quality metal, this leg features a simple yet robust design that ensures stability and durability.

#### Key Features:

- Legs comes in 3 shapes i.e. Square, Circular, & Rectangle.
- Sleek, minimalist design complements modern furniture styles.
- Available in various finishes to suit your design aesthetic.
- **Specifications:**
- Material: MS Metal.
- Available in various width to suit different design requirement & table styles.
- Finish: Antique Silver, Antique Gold, Metallic Gold, Rush Brown, Metallic Silver, Metallic Grey, Amazon, Black Matt, Slate Grey, White Matt, Brich Satin, Glossy White.

#### Applications:

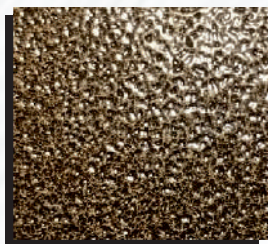
- Side tables
- Desks
- Dining Tables
- Office tables
- Study tables
- Other modern furniture pieces



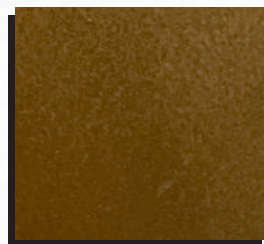
## CHOICES OF FINISH



Antique Silver



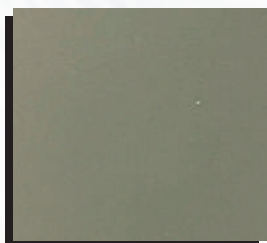
Antique Gold



Metallic Gold



Rush Brown



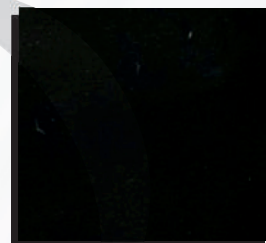
Metallic Silver



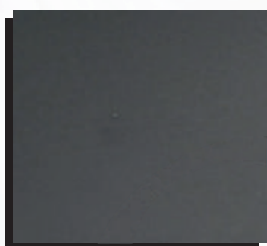
Metallic Grey



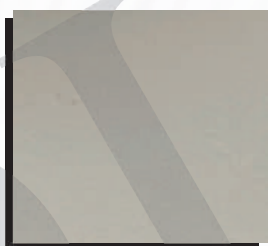
Amazon



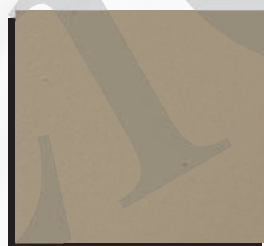
Black Matt



Slate Grey



White Matt



Brick Satin



Glossy White

The Bliss Series offers 12 color choices to bring your vision to life.

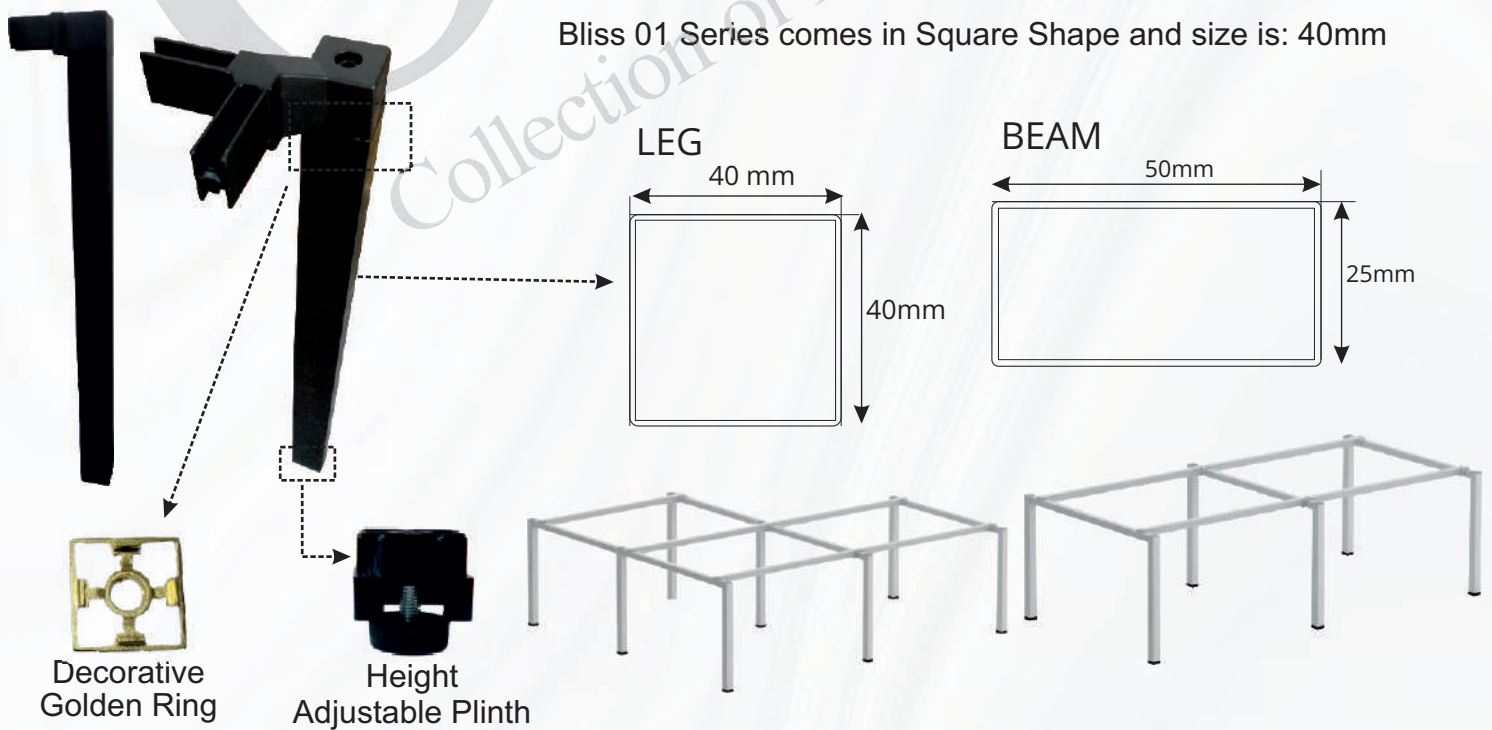




## BLISS 01



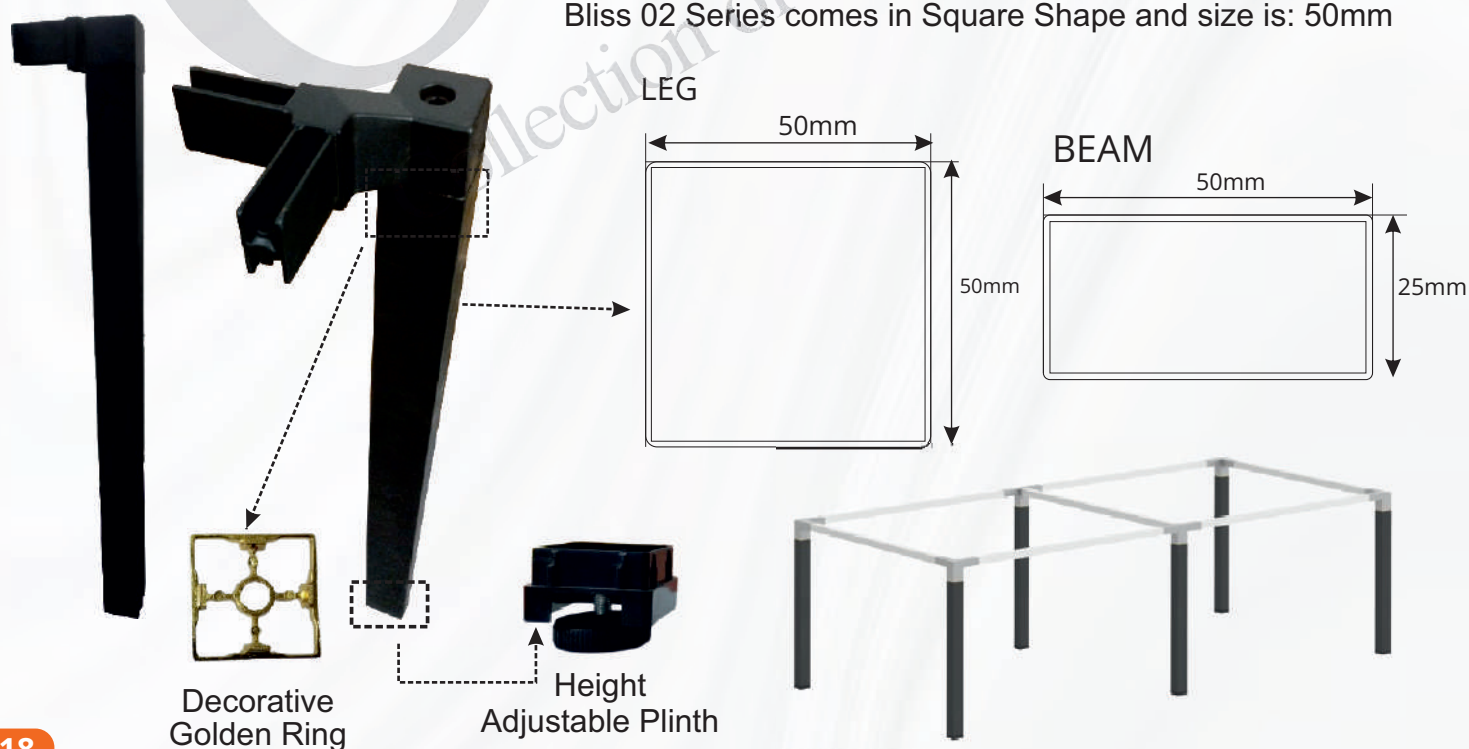
Bliss 01 Series comes in Square Shape and size is: 40mm



# BLISS 02



Bliss 02 Series comes in Square Shape and size is: 50mm

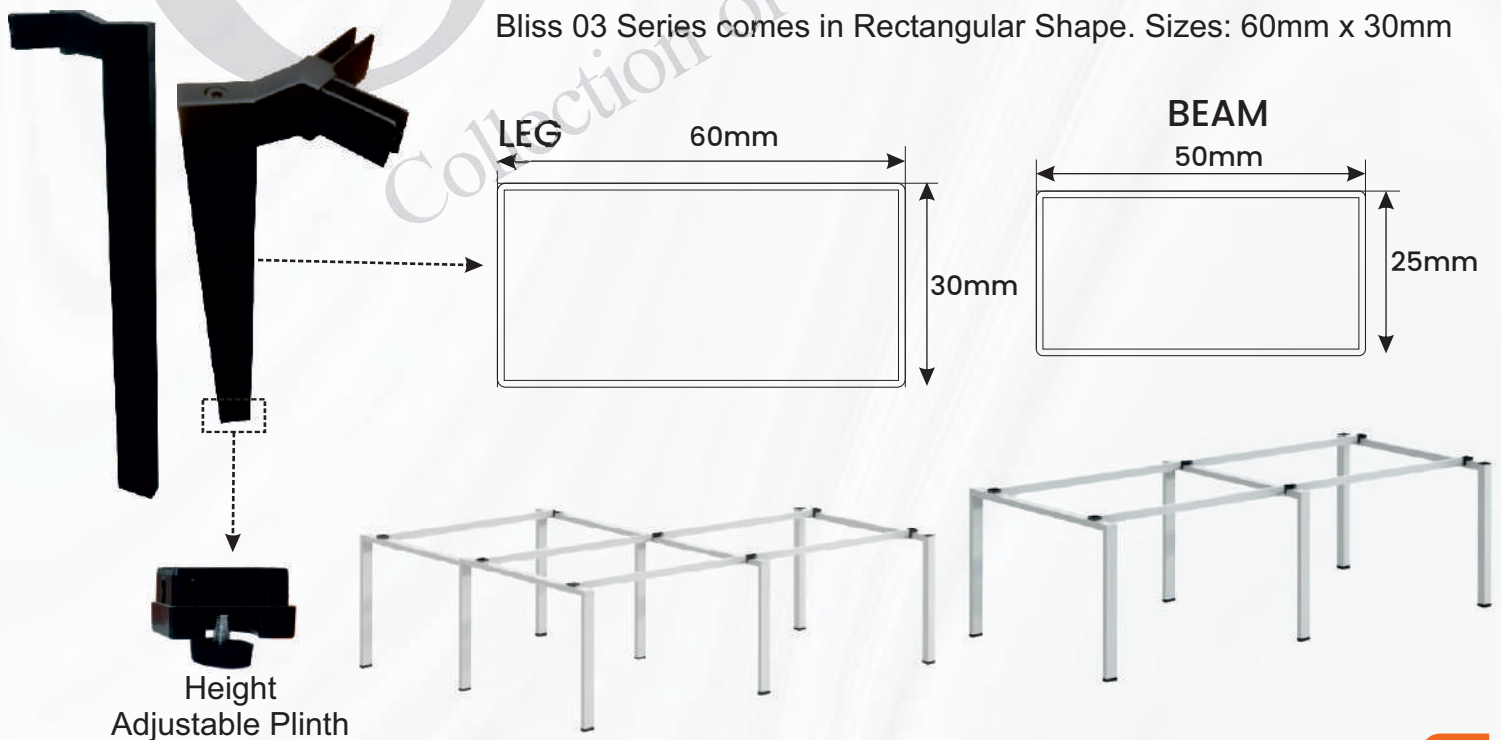




## BLISS 03



Bliss 03 Series comes in Rectangular Shape. Sizes: 60mm x 30mm



## BLISS 04



Bliss 04 Series comes in Circular Shape and size is: 50mm





## CAIRO SERIES

### Cairo Leg Series

Cairo Leg Series, a sleek and sturdy solution for modern furniture pieces. It has 2 designs. Crafted from high-quality metal, this leg features a simple yet robust design that ensures stability and durability.

#### Key Features:

- Legs comes in 2 different designs.
- Sleek, minimalist design complements modern furniture styles.
- Available in various finishes to suit your design aesthetic.
- **Specifications:**
- Material: MS Metal.
- Available in various width to suit different design requirement & table styles.
- Finish: Antique Silver, Antique Gold, Metallic Gold, Rush Brown, Metallic Silver, Metallic Grey, Amazon, Black Matt, Slate Grey, White Matt, Brich Satin, Glossy White.

#### Applications:

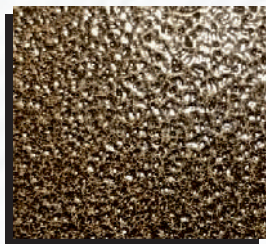
- Side tables
- Desks
- Dining Tables
- Office tables
- Study tables
- Other modern furniture pieces



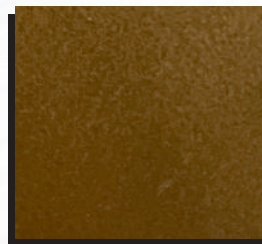
## CHOICES OF FINISH



Antique Silver



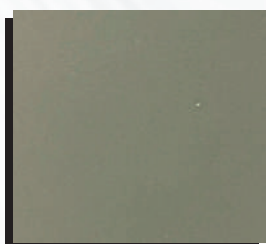
Antique Gold



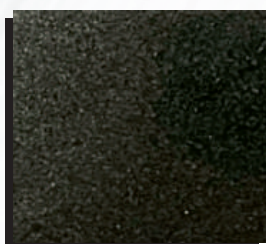
Metallic Gold



Rush Brown



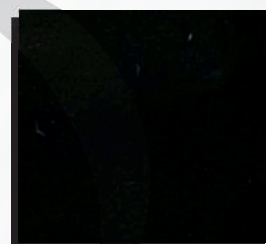
Metallic Silver



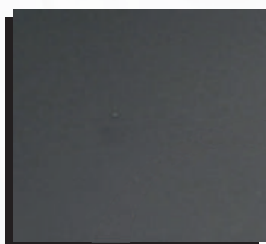
Metallic Grey



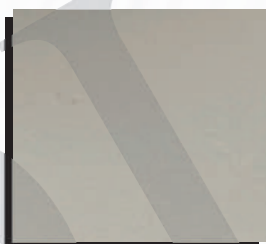
Amazon



Black Matt



Slate Grey



White Matt



Brick Satin



Glossy White

The Cairo Series offers 12 color choices to bring your vision to life.

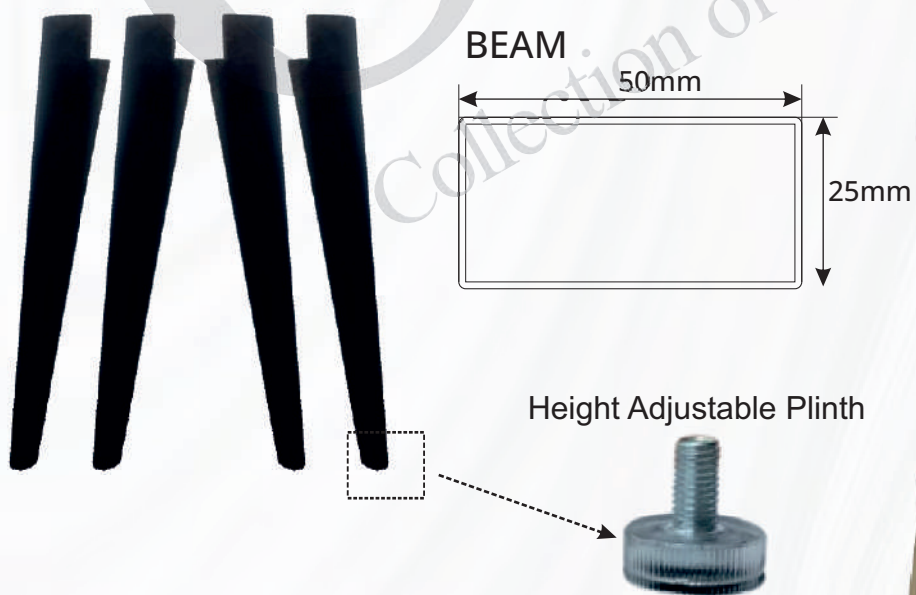




## CAIRO 01



## CAIRO 02







## DUNE TABLE SERIES

### Dune Table Leg Series

Add a touch of sophistication and durability to your furniture designs with our Premium Metal Leg. Crafted from high-quality metal, this leg features a sturdy and versatile design that complements a wide range of furniture styles

#### Key Features:

- Can be installed in any table top (Wooden, Glass, Marble, etc.).
  - Give a luxurious look to any table.
  - Available in various finishes to suit your design aesthetic.
  - The metal legs have a unique design made of Aluminium material.
- 
- **Specifications:**
  - Material : Aluminium.
  - Available in various width to suit different design requirement & table styles.
  - Finish: Antique Silver, Antique Gold, Metallic Gold, Rush Brown, Metallic Silver, Metallic Grey, Amazon, Black Matt, Slate Grey, White Matt, Brich Satin, Glossy White.

#### Applications:

- Side tables
- Desks
- Dining Tables
- Office tables
- Study tables
- Other modern furniture pieces

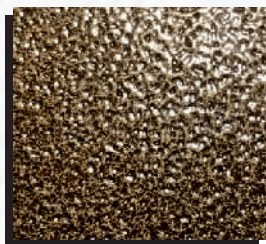




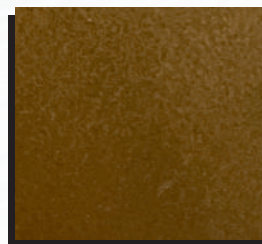
## CHOICES OF FINISH



Antique Silver



Antique Gold



Metallic Gold



Rush Brown



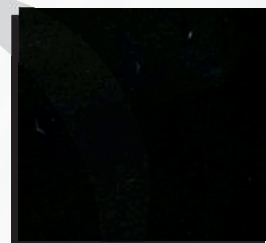
Metallic Silver



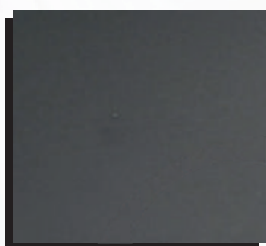
Metallic Grey



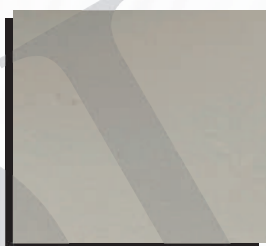
Amazon



Black Matt



Slate Grey



White Matt



Brick Satin



Glossy White

The Dune Table Series offers 12 color choices to bring your vision to life.



## DUNE 01



BEAM

50mm

25mm

Height  
Adjustable Plinth





## DUNE 02









## DUNE DOUBLE DECOR SERIES

### Dune Double Decor Leg Series

It has 2 leg designs and both the legs have 2 colour tones. Crafted from high-quality metal, this leg features a sturdy and versatile design that complements a wide range of furniture styles.

#### Key Features:

- Has versatile color choice i.e. the end user can choose from given colour choices as the Dune DD Legs have 2 colour theme.
- Can be installed in any table top (Wooden, Glass, Marble, etc.).
- Give a luxurious look to any table.
- Available in various finishes to suit your design aesthetic.
- **Specifications:**
- Material: Aluminium.
- Legs have 2 colour theme.
- Available in various width to suit different design requirement & table styles.
- Finish: Antique Silver, Antique Gold, Metallic Gold, Rush Brown, Metallic Silver, Metallic Grey, Amazon, Black Matt, Slate Grey, White Matt, Brich Satin, Glossy White.

#### Applications:

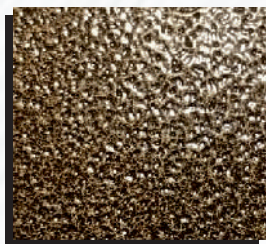
- Side tables
- Desks
- Dining Tables
- Office tables
- Study tables
- Other modern furniture pieces



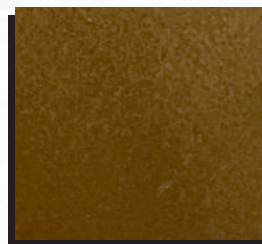
## CHOICES OF FINISH



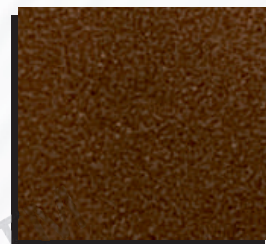
Antique Silver



Antique Gold



Metallic Gold



Rush Brown



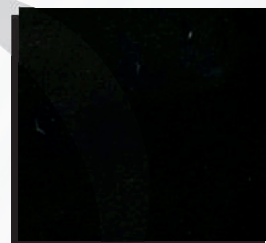
Metallic Silver



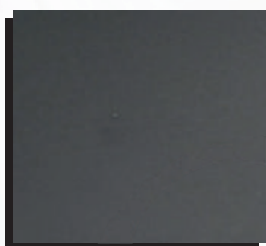
Metallic Grey



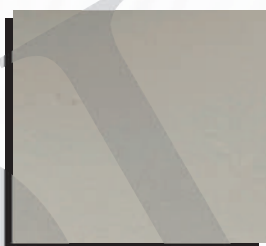
Amazon



Black Matt



Slate Grey



White Matt



Brick Satin



Glossy White

The Dune Double Decor Series offers 12 color choices to bring your vision to life.





## DUNE DD 01







## LUXOR SERIES

### Luxor Leg Series

Add a touch of sophistication and durability to your furniture designs with our Premium Metal Leg. Crafted from high-quality metal, this leg features a sturdy and versatile design that complements a wide range of furniture styles

#### Key Features:

- Can be installed in any table top (Wooden, Glass, Marble, etc.).
- Give a luxurious look to any table.
- Available in various finishes to suit your design aesthetic.
- **Specifications:**
- Material: Aluminium.
- Available in various width to suit different design requirement & table styles.
- Finish: Antique Silver, Antique Gold, Metallic Gold, Rush Brown, Metallic Silver, Metallic Grey, Amazon, Black Matt, Slate Grey, White Matt, Brich Satin, Glossy White.

#### Applications:

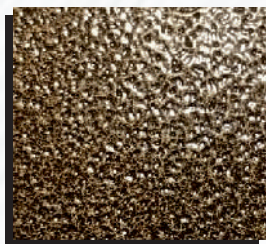
- Side tables
- Desks
- Dining Tables
- Office tables
- Study tables
- Other modern furniture pieces



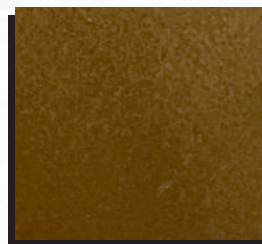
## CHOICES OF FINISH



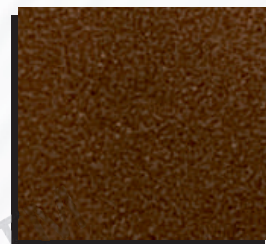
Antique Silver



Antique Gold



Metallic Gold



Rush Brown



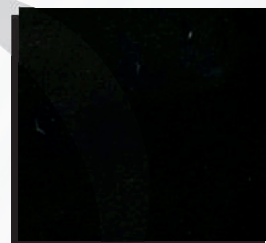
Metallic Silver



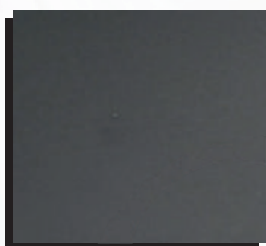
Metallic Grey



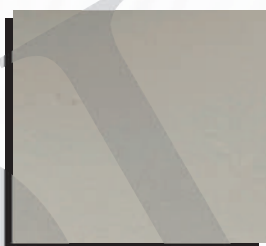
Amazon



Black Matt



Slate Grey



White Matt



Brick Satin



Glossy White

The Luxor Series offers 12 color choices to bring your vision to life.





## LUXOR SERIES

- Coffee Tables
- Dining Tables
- Office Staff Tables
- Round Glass Tables
- Study Tables
- Desks
- Side Tables







# Olío Metal Legs Collection

Solution of Endless Imaginations





# OLiO<sup>TM</sup>

Metal Legs - Endless Possibilities

## GET IN TOUCH

☎ +91-79764 02788  
✉ [olioindia28@gmail.com](mailto:olioindia28@gmail.com)  
🌐 [www.oliogroup.in](http://www.oliogroup.in)

Follow Us For More Details

@olioindia   